

Photo #7 – Proposed overhead conduit at mezzanine

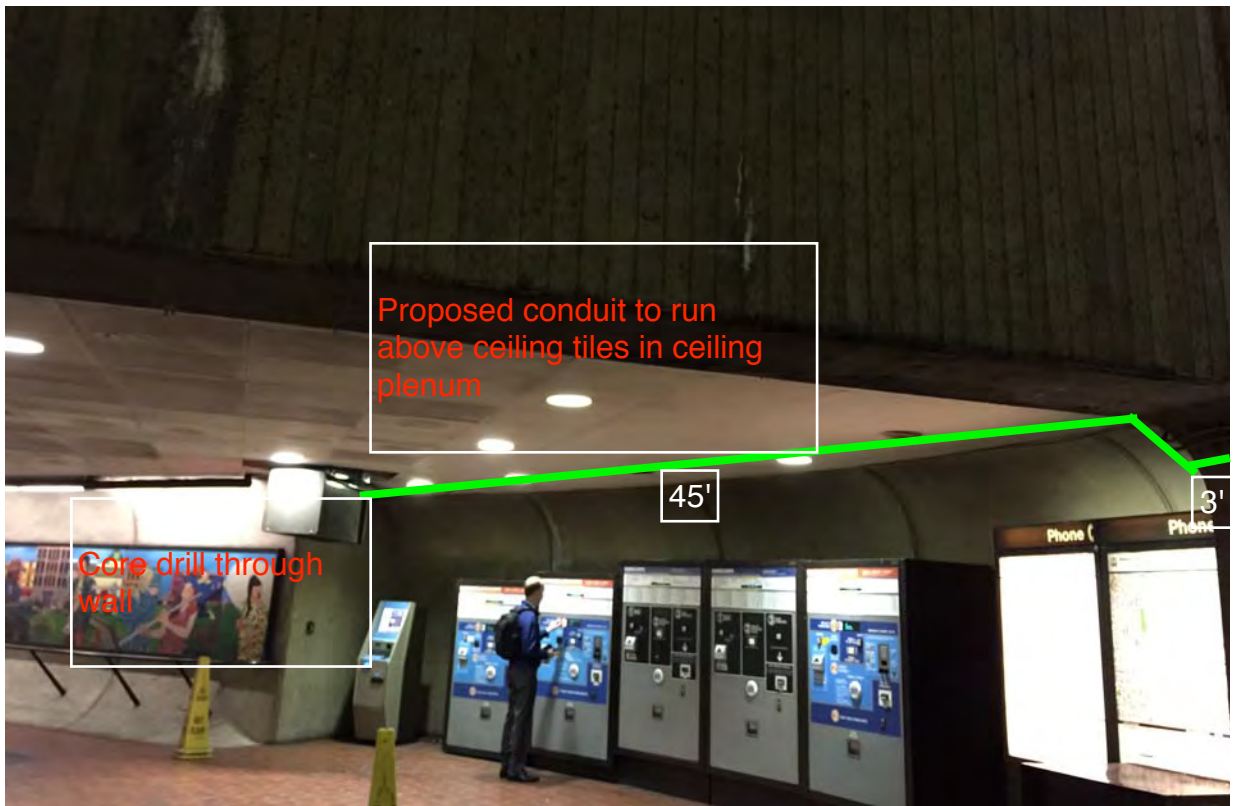


Photo #8 – Proposed overhead conduit in Room 214

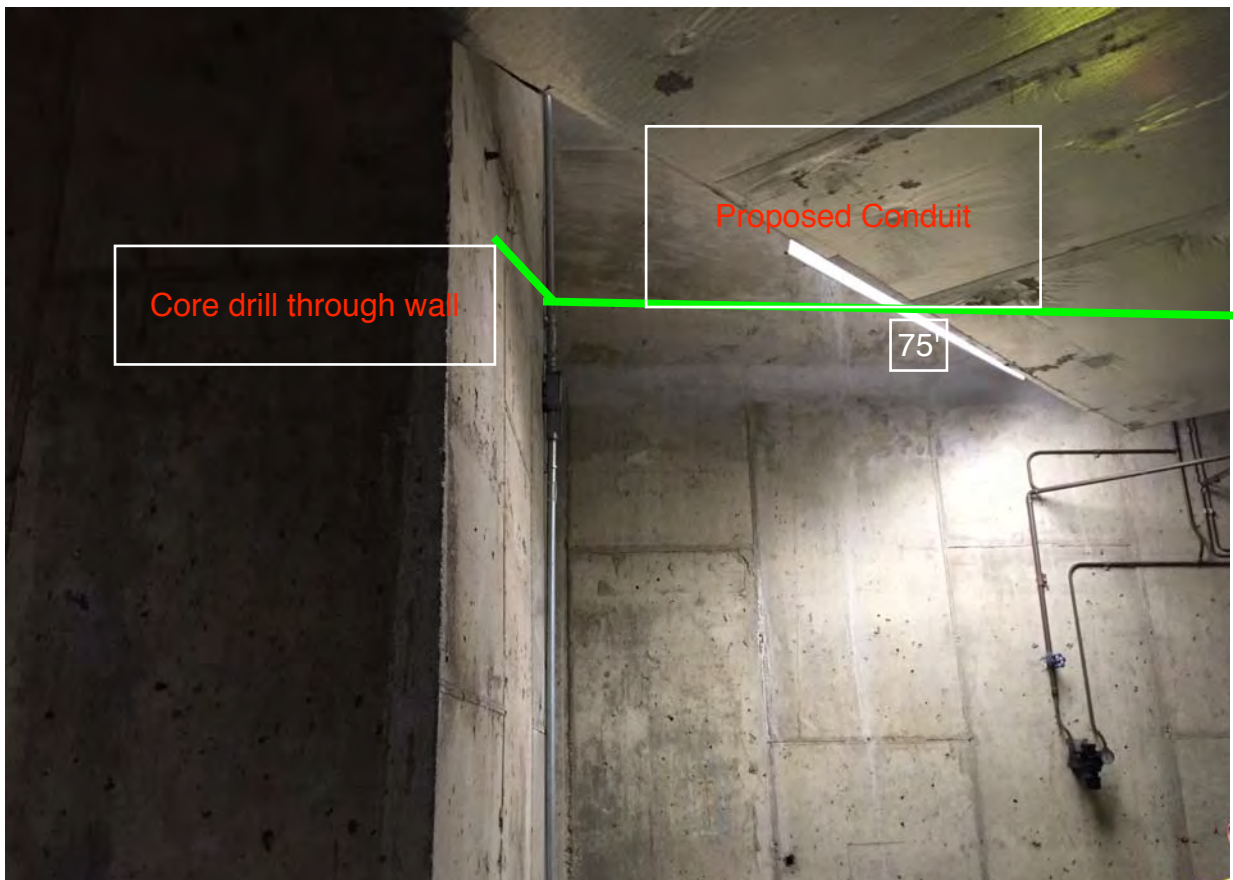


Photo #9 – Proposed overhead conduit in Room 214

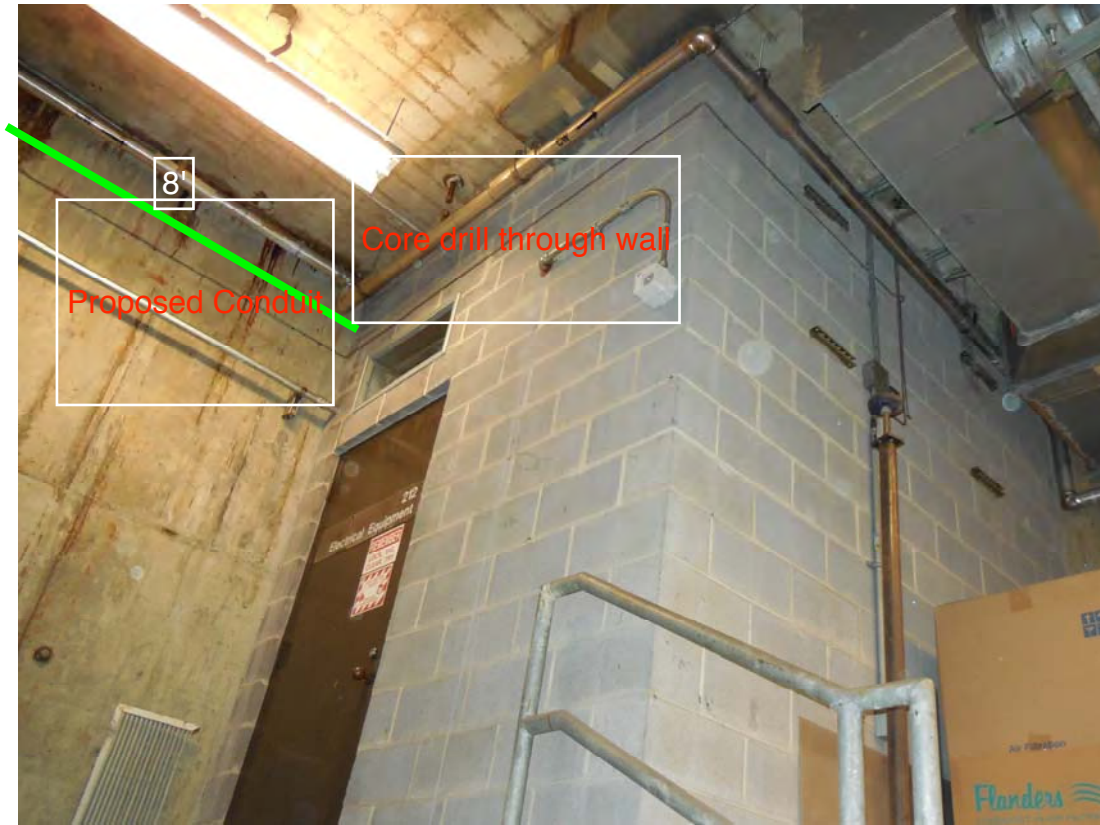
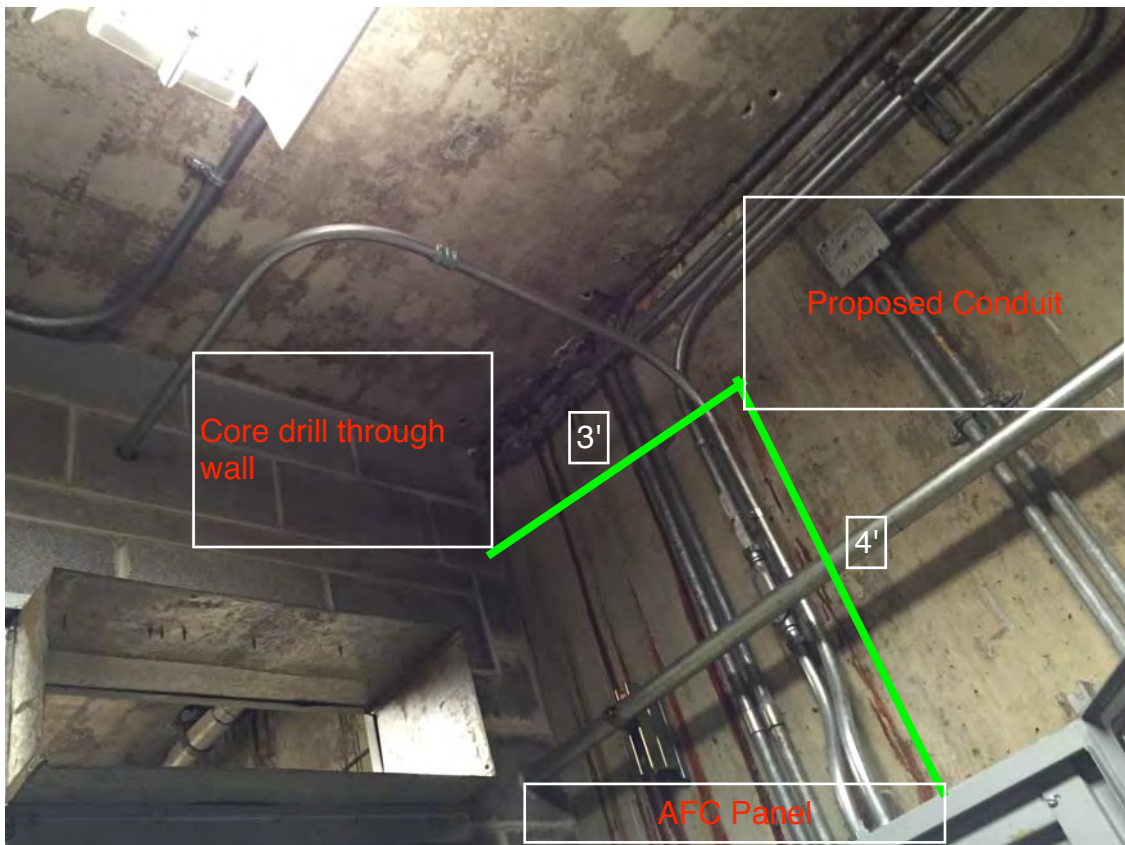
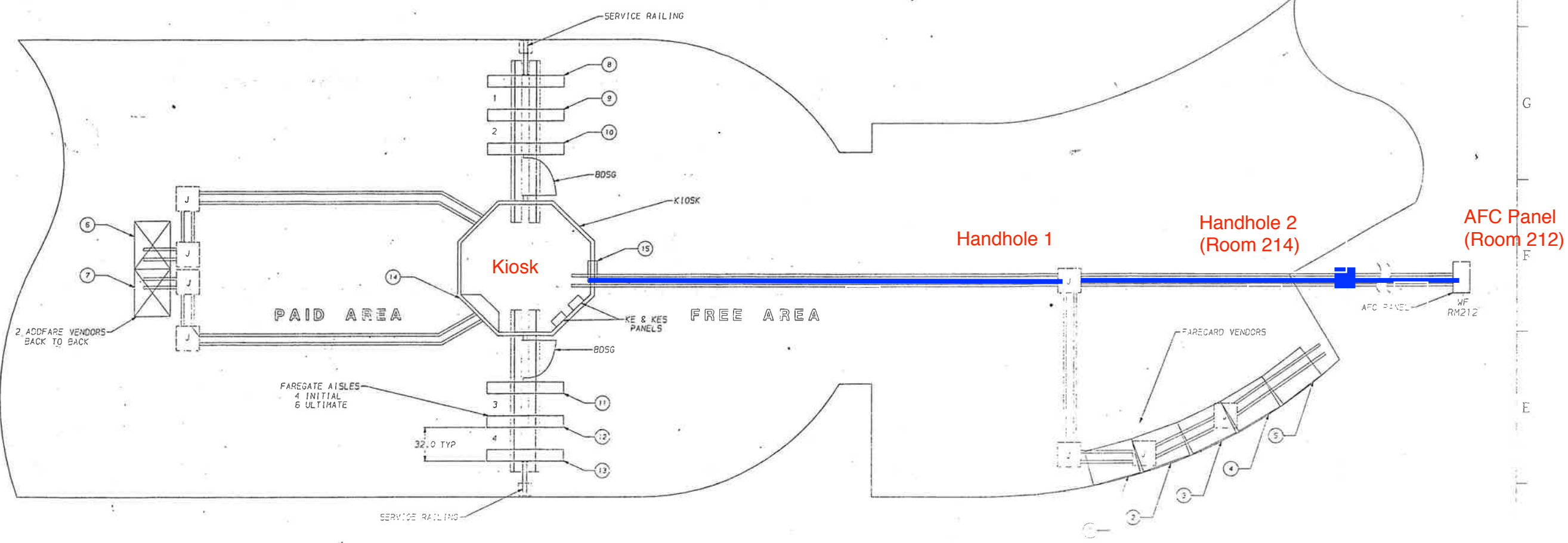


Photo #10 – Proposed overhead conduit in Room 212



ZONE REV	REVISIONS	DATE APPROVED
A	INITIAL RELEASE	
B	CON 028689 BUD 03/20/82	

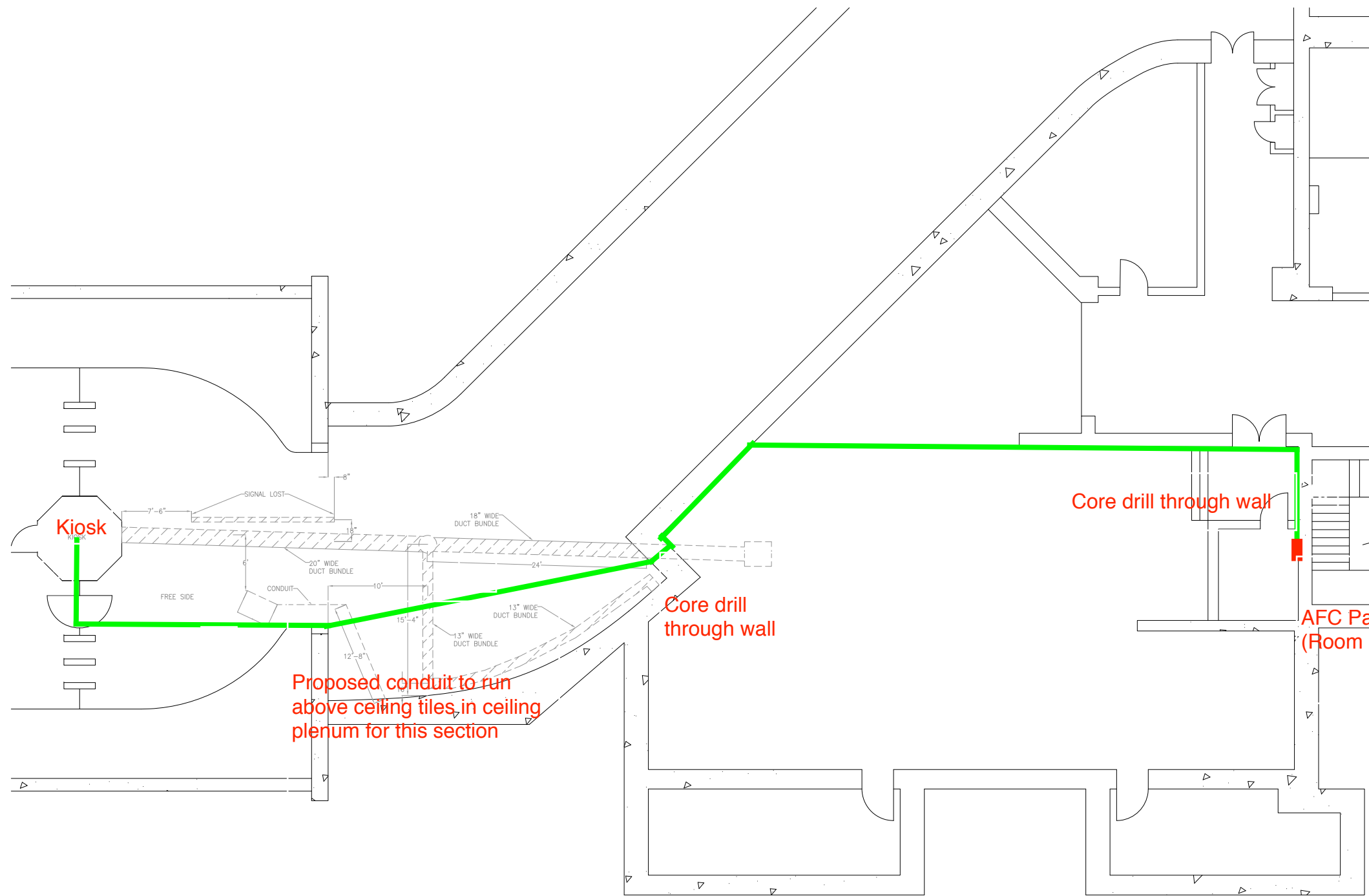


MEZZANINE NO. 74

NOTES:

- FOR VENDOR AND ADDFARE INSTALLATION SEE 931-4002.
- FOR SHADS INSTALLATION SEE 931-4001.
- FOR ENTRY, EXIT AND REVERSIBLE GATE INSTALLATION SEE 931-4003.
- FOR BI-DIRECTIONAL SERVICE GATE INSTALLATION SEE 931-4005.
- FOR A TYPICAL MEZZANINE INSTALLATION SEE 931-4000.
- CIRCUIT BREAKERS WITH COMMON NEUTRAL:
7 & 9; 1, 3 & 5; 16 & 18; 10 & 12; 4 & 6.

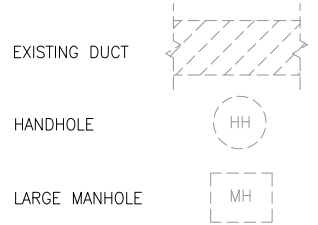
ITEM	NAME	S/N	PANEL AFC	I/35 BUCKET?
1	VENDOR	1857	WF	9
2	VENDOR	1858	WF	7
3	VENDOR	1840	WF	5
4	VENDOR	1819	WF	3
5	VENDOR	1814	WF	1
6	ADDFARE	2330	WF	18
7	ADDFARE	2225	WF	18
8	ENTRY GATE	3828	WF	12
9	REV. GATE	7653	WF	10
10	EXIT GATE	4814	WF	N/A
11	ENTRY GATE	3805	WF	4
12	REV. GATE	7841	WF	6
13	EXIT GATE	4810	WF	
14	SHADS	8814	KE	1
15	SHADS CLOCK	48912	KES	8
16	EMERGENCY LT		KL	4



PLAN NOTES:

1. DIMENSIONS ARE IN FEET AND INCHES.
2. DIMENSIONS ARE FOR REFERENCE ONLY.
3. EXISTING IN-FLOOR DUCTS/CONDUITS WERE IDENTIFIED USING A PORTABLE GPR SCANNING DEVICE.
4. THE SCANNING COVERAGE IS LIMITED TO THE MEZZANINE FLOOR ONLY.
5. GPR SCANNING HAS THE FOLLOWING LIMITATIONS: (i) 12 INCHES VISIBLE SCANNING DEPTH; (ii) VISIBILITY BEYOND CONGESTED OR NEAR SURFACE REINFORCEMENT LAYERS; (iii) DETECTION OF PVC AND OTHER NON-METALLIC OBJECTS (iv) DETERMINATION OF SIZE AND EXTENTS OF SUBSURFACE ANOMALIES SUCH AS SLAB VOIDS OR REBAR SIZES; AND (v) VISIBILITY WHEN VARIABLE MOISTURE CONDITIONS EXIST IN THE SUBSTRATE.

LEGEND:



Proposed conduit to run above ceiling tiles in ceiling plenum for this section

Core drill through wall

Core drill through wall

AFC Panel (Room 212)

U STREET WEST STATION
E-100 NOT TO SCALE

CONTRACT NO. XXXXXX

DESIGNED C. LOOSE 11-14 DATE
 DRAWN C. LOOSE 11-14 DATE
 CHECKED M. BUTLER 11-14 DATE
 APPROVED _____ DATE

REFERENCE DRAWINGS	
NUMBER	DESCRIPTION

REVISIONS		
DATE	BY	DESCRIPTION

WASHINGTON METROPOLITAN AREA TRANSIT AUTHORITY
 DEPARTMENT OF TRANSIT INFRASTRUCTURE AND ENGINEERING SERVICES
 OFFICE OF INFRASTRUCTURE RENEWAL PROGRAM
 APPROVED _____

GFP A Gannett Fleming/Parsons JOINT VENTURE
 SUBMITTED _____
 PROJECT MANAGER

15-NEPP-01
 IN - FLOOR DUCT INSPECTIONS
 E03 U Street - West
 PROPOSED OVERHEAD CONDUIT ROUTE

SCALE NOT TO SCALE
 DRAWING NO. E03-E-100
 XXX